

# PRODUCT FACT SHEET

## CONNECT SOFA FURNITURE / LIGHTING / ACCESSORIES

**Anderssen & Voll on the design** "Connect is a modular seating system based on the idea of finding perfect proportional connections between the different components of the sofa. The design shows a precise attention to details and has architectural principles derived from modernism. The sleek long lines give the sofa a modern yet timeless expression. Connect the modules to create a sofa of your choice."

PROCESS Wood frame is padded with cold foam with vatting on the top. Then upholstered with Kvadrat textiles.

DESIGNED BY / YEAR OF DESIGN Anderssen & Voll / 2012

TYPE Modular sofa

DESCRIPTION Modular sofa with 11 different modules that can be assembled in numerous ways. Comes in various textiles from Kvadrat.

ENVIRONMENT Indoor

DIMENSIONS (CM) See page 2

(45 cm contract height available on request for projects)

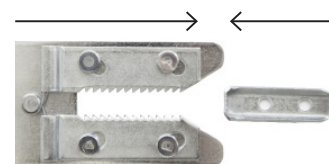
MATERIAL Wood frame, cold-foam filling, Kvadrat textiles, metal brackets for connecting modules. The modules are kept together with a connecting bracket.

STANDARD TEXTILES Steelcut Trio 133, Remix 123, Steelcut Trio 515

Other Remix or Steelcut Trio colours available at a 5% extra cost. Other fabric types for projects available on request.

CLEANING INSTRUCTIONS Remove non-greasy stains by carefully dabbing with a lint-free cloth or sponge wrung out in clean warm water. If necessary, clean by dabbing with soapy water or water with a little dish soap. Finally, dab the surface with clean water.

ABOUT THE DESIGNER Anderssen & Voll are two thirds of the former Norway Says and among the most prominent and successful Norwegian designers. They have formerly been named both Norwegian and Scandinavian designers of the year in Norway and have received International awards and recognition for their work with furniture, lighting and home accessories.

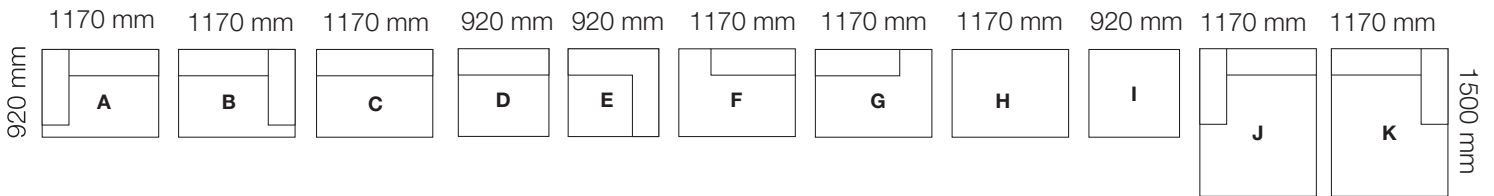


# PRODUCT FACT SHEET

**CONNECT SOFA**  
FURNITURE / LIGHTING / ACCESSORIES

## COMBINE YOUR SOFA FROM 11 DIFFERENT MODULES

**A** Left Armrest Module, **B** Right Armrest Module **C** Centre Module - Long **D** Centre Module - Short **E** Corner Module **F** Left Open-ended Module  
**G** Right Open-ended Module **H** Ottoman Module - Long **I** Ottoman Module - Short **J** Left Armrest Lounge Module **K** Right Armrest Lounge Module



### OVERVIEW

End modules



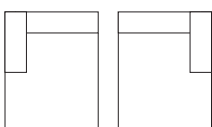
Center & corner modules



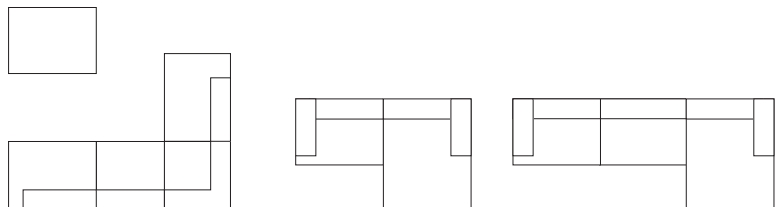
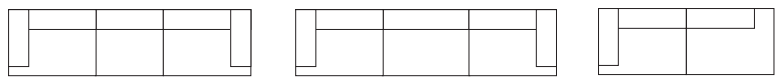
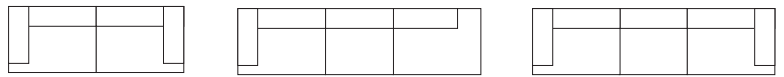
Freestanding module



End & lounge modules



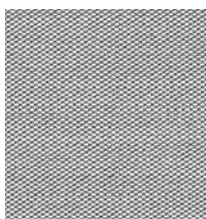
### INSPIRATION



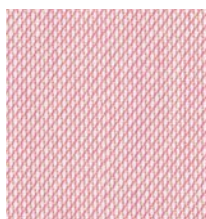
### STANDARD TEXTILES



Remix 123



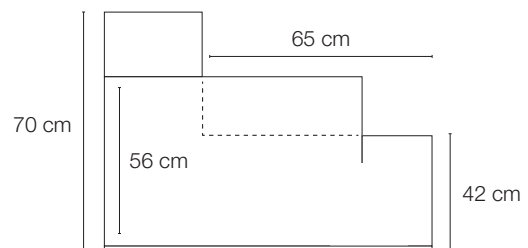
Steelcut Trio 133



Steelcut Trio 515

Other Remix & Steelcut Trio textiles available at a 5% extra cost.  
Other textile types for projects available on request.

### DIMENSIONS



**A - I** = 920 mm

**J - K** = 1500 mm